

pixledge



The what
The why
The how



What is the Edge?



PiXL Edge is...

- An opportunity to develop important attributes
- An opportunity to make yourself attractive to further education and future employers
- An opportunity to give you the **EDGE**

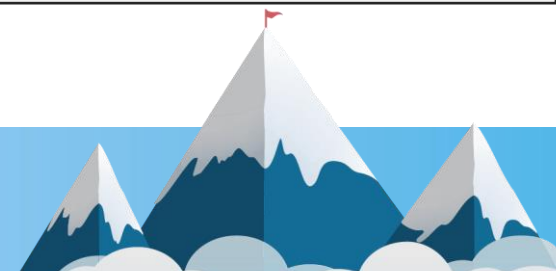
Leadership

Organisation

Resilience

Initiative

Communication



Did you know that The Edge will involve...

One million
young people
aged 8 – 18
years old



Young people
in schools all
over England
and Wales

Young people in every kind
of school



What does the Edge involve?

- ✓ Understanding the 5 Life Attributes (LORIC)
- ✓ Choosing which of these you are going to develop first and how
- ✓ Preparing a personalised programme to make this happen
- ✓ Getting an award at the end of the programme

Leadership

Organisation

Resilience

Initiative

Communication

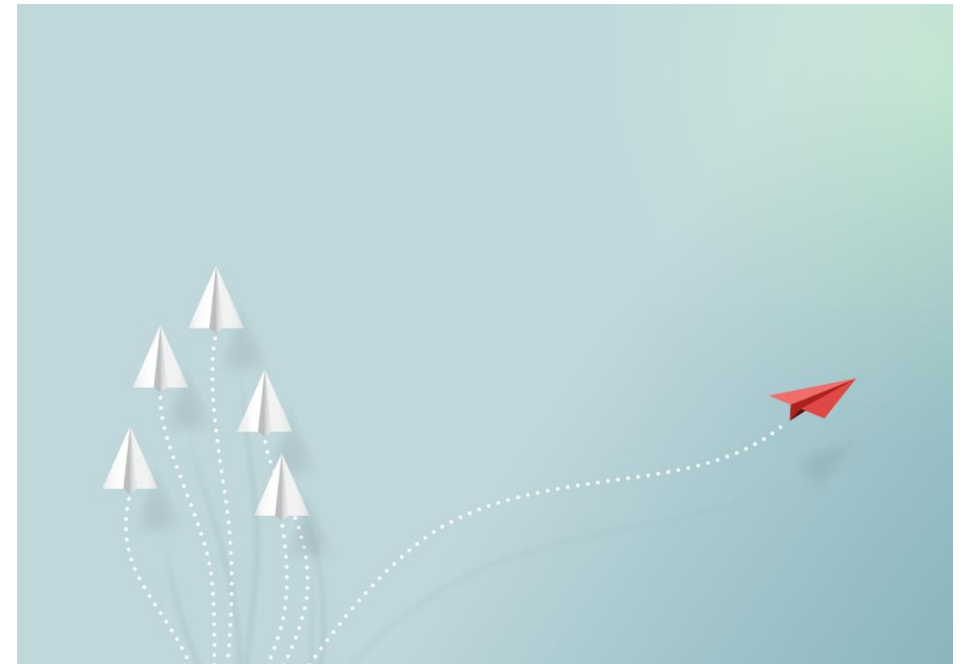


Let's look at the 5
attributes (LORIC)



Leadership

- Working with other students and adults to develop my interpersonal skills
- Successfully directing/ managing/ leading groups or individuals



What sort of Leadership can you do?

- Direct a workshop teaching Primary School children how to cook
- Produce a short film about road safety for younger students
- Lead a activities in a PE lesson



Organisation

- Working to develop my organisational skills on a personal level and in a wider context
- Successfully demonstrating self-organisation and the ability to bring ideas or people together for a planned activity



What sort of Organisation can you do?

- Create an online blog to showcase your work and the work of your peers in Art
- Create a charity fundraising website using the skills you have picked up in ICT



Resilience

- Working to develop perseverance and strength of character
- Successfully achieving sustained personal growth towards a goal, overcoming challenges and difficulties on the way



What sort of Resilience can you show?

- Persevere and regularly work at an animal sanctuary (or vets, RSPCA Centre etc.)
- Undertake a successful grading exam in a martial art
- Train for a ½ marathon event



Initiative

- The ability to take charge and act
- The ability to see an opportunity and go for it



What sort of Initiative can you take?

- Launch and organise an after-school club
- Volunteer to take part in a public speaking competition



Communication

- Working to inform, engage, motivate and inspire students and adults
- Successfully choosing the correct form of communication dependent on the context/audience



What sort of Communication can you learn?

- Perform as a stage manager to support a school production
- Speak at a Parents' evening / Open Evening representing a specific subject and explaining the course content and structure



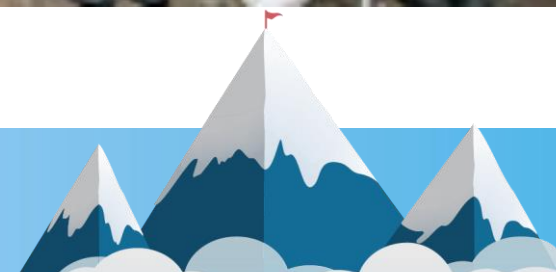
The Edge Levels

The Edge
is a **three
tier** Award
Scheme

Apprentice

Graduate

Masters



The Edge Levels

You must complete a series of activities focused on each of the attributes

Leadership

Organisation

Resilience

Initiative

Communication

Apprentice

10 activities
(2 per attribute)

Graduate

8 activities
(1 per attribute &
3 free choice)

Why do the Edge?



Why the Edge?



- Inspire & expand students as individuals
- Develops & accredits personal attributes that are essential for employability & life
- Help students discover their own strengths & aptitudes and to provide opportunities for self-analysis & choice
- Monitors development of personal skills
- Prepares leavers for life and citizenship beyond school
- Give students a competitive edge in the recruitment process



Why the Edge?

Improved engagement

Continuous record of improvement

Teachers get to know students interests and abilities outside the classroom

Personalised for each student

Do students want to have the Edge when...

Applying for a job?

Seeking out new
opportunities?

Applying for
further education?

Speaking to new
people

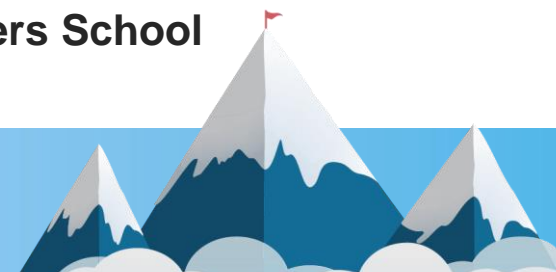


The Why?

The Edge is a truly amazing programme!! I have always self-doubted my ability and if it wasn't for the Edge those self-doubts would still be hanging over me.

With the Edge I can challenge myself to achieve. You know me and how embarrassed I have been about my academics, but since doing the Edge it has helped me to balance both.

Lucy, Masters student at Charters School



How it works



The Edge activities

The activity challenges get harder as you move through the levels.

You will start at
Apprentice
Level

Search the database of activities to find something which you would like to do

You will need to choose two activities for each of the 5 attributes

This could take up to 3 years to complete so there is no need to rush!



The Edge activities

All the activities
you can
choose from
are listed on
The Edge
database

Jack Black (Y7White)
Apprentice programme

Print Login Options

Leadership

Conduct a rehearsal for a musical group, orchestra or choir in your school



Organisation

Initiative

Find an activity

Debate



Browse by command word



Return to command words

Write and deliver a speech as part of an organised class debate



Lead a public speaking team in a competition



Lead a small-scale class discussion or debate on the current topic in a lesson



Captain a school team at a regional competition



Captain a team at school









Deliver a presentation about a culture that you have researched that is different to your own



Student profiles

Tutors can sign off students activities by reading their evidence

| | |
|---|--|
| <p>Lead a group on an outdoor activity where there is challenge and/or difficulty, eg caving.</p> <p>Describe your activity, mention what you are going to do and how you are planning to achieve it. In Tirabad I lead our group through the Squirrel tunnel. I Needed to be brave and have a lot of courage; as it was a really small tunnel and didn't know if I was going to be all right.</p> <p>Target completion date 16/12/2015</p> <p>Completed date 2016-01-14 08:43:43</p> <p>What I learnt from this activity I have now completed this activity. For this activity I needed to be brave and have a lot of trust in Chris our instructor as he was the one that said I should go first in the Squirrel tunnel. I am pleased I did it as it wasn't as bad as I thought it would be!</p> <p>The location of the evidence supporting this activity You could talk to my group. As well as Chris</p> <p>Marked as completed</p> | <p>Lead a group on an outdoor activity where there is challenge and/or di... <input checked="" type="checkbox"/></p> <p> Organisation</p> <p> Initiative</p> <p>Volunteer and take part in the running of a tutor time activity </p> <p> Resilience</p> <p>Complete a sponsored walk </p> <p> Communication</p> |
|---|--|

PLFONE



Encouraging self-reflection

- It's not just the doing that's important – it's being able to articulate what you've done.
- Students must report what they have completed

Evaluation Form [Video Guide](#)

How did completing this activity improve your initiative?

0 Characters, you need to write a bit more (min 200 characters). **What should I write?**

What is Initiative
Inventiveness, Enterprise, Resourcefulness, Creative, Innovative, Imaginative, Ambitious, Proactivity

Key verbs
Begin, Open, Take up, Instate, Launch, Set up, Pioneer

Example Sentence Starters
I launched ...
I decided to open ...
I had to think creatively because ...
In this task, I had to be proactive because ...

Examples

Hide Examples

Example 1: "Create a high quality wall display independently for a subject department"

I saw on BBC a documentary about how animals were used in World War I which I thought was interesting. I asked Ms Gomez if I could do a wall display about it in the History corridor, because I thought other people would find it interesting too.

There wasn't much information on this in the books in the library, so I decided to use my initiative and look on the internet. I went on Google and looked for images to use. I also found case studies and examples to add to the quotations I already had from the documentary.

I think this shows my resourcefulness and that I am an imaginative person. Ms Gomez has asked if I can also do a talk about it in next week's assembly.

If I did this again, I'd like someone who is a bit better at art than me to help, as some of the pictures were a bit scruffy!

Evaluation Form [Close Video](#)

PL Student 10

Communication

0 Characters, you need to write a bit more (min 200 characters). **What should I write?**

What is Organisation
Management, Assembling, Coordination, Composition, Regulation, Ability to multi-task

Key verbs
Coordinate, Formulate, Plan, Compose, Catalogue, Classify, Put together, Put in order, Complete, Regulate, Construct, Arrange, Categorise, Separate, Design, Plan, Strategise, Prioritise, Schedule, Compile

Example Sentence Starters
I scheduled ...
My plan for this task was to ...
I was in charge of coordinating ... during this activity ...
During this task, it was really important for me to arrange ...

Examples

Who can I talk to and what their involvement was with the activity, or where can I look, to prove that this activity has been completed?

0 Characters, you need to write a bit more (min 30 characters).

Evaluation Form [Video Guide](#)

How did completing this activity improve your initiative?

0 Characters, you need to write a bit more (min 200 characters). What should I write?

What is Initiative

Inventiveness, Enterprise, Resourcefulness, Creative, Innovative, Imaginative, Ambitious, Proactivity

Key verbs

Begin, Open, Take up, Instate, Launch, Set up, Pioneer, Set in Motion, Implement, Volunteer

Example Sentence Starters

I launched ...

I decided to open ...

I had to think creatively because ...

In this task, I had to be proactive because ...

Examples

Which topics do the resources cover?



PiXL Orate

All aspects of verbal communication including, for example, **body language** and **listening and responding**



PiXL
Wellbeing

Extensive resources on student wellbeing including, for example
- **nutrition and healthy eating**,
rest, **mind training**, **resilience**



A series of lessons covering how to live **without harm**, acts of **kindness** and **respect**.

Masters Level

- Available at Pass, Merit or Distinction
- Leads to formal qualification
- Student decides depth of activity detail seen via digibadge
- Elements from other providers' activities able to be captured e.g. NCS, D of E, World Challenge





Get ready to Lead...



Get Organising



Show Resilience



Use your Initiative



Get Communicating



Good luck & most of
all enjoy The Edge

