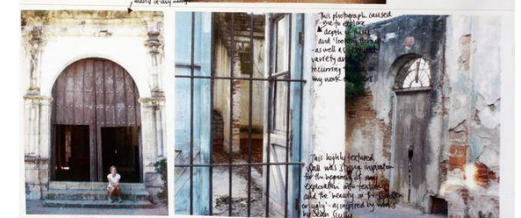
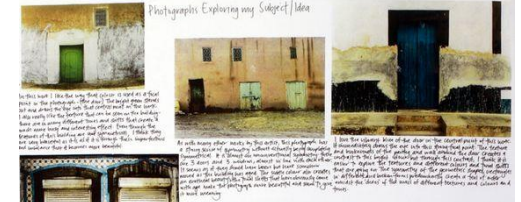
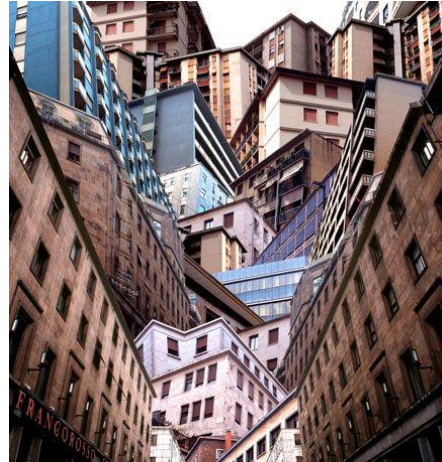


A LEVEL PHOTOGRAPHY GUIDE



Course Structure

We are offering the opportunity to study the Edexcel specification for the A-level in Fine Art and/or Photography. Students may study both disciplines as two separate courses or one singly. The courses complement each other and provide versatility for individual student artists, from painters to photographers, graphic communicators to textile artists, with many possibilities. The courses are two years in total and lead to an A-level qualification. Both together or separately are aimed at students who wish to enter into higher education within the arts.

Q. How is the course structured?

A. Both courses comprise of two components:

Component 1: Personal investigation

A practical body of coursework, designed to be meaningful and an in depth focus of personal student study. This is a series of sketchbooks, experimental recording and final outcomes. The practical development is supported with written material which takes an essay format, to inform and support student themes within practical work. This will be 1000-3000 words of continuous prose.

What's assessed

Personal investigation
Personal Study (12% Essay)

Assessed

- 90 Marks
- 60% of A-level

Non-exam assessment (NEA) set and marked by the centre and moderated by Edexcel during a visit to the centre. Visits will normally take place in June

+ Component 2: Externally set assignment

The examined element is performed in timed conditions. Students have 15 hours of supervised examination time to produce their outcome(s) which are supported by a preparation of portfolio work designed to drive the response for the exam at the end of the course. Students will be required to develop their response based on themes issued by the exam board.

What's assessed

Response to an externally set assignment

Assessed

- preparatory period + 15 hours supervised time
- 72 marks
- 40% of A-level

Non-exam assessment (NEA) set by Edexcel, marked by the centre and moderated by Edexcel during a visit to the centre. Visits will normally take place in June

Q. How will I be assessed?

A. The teacher will make assessments that will measure how students have achieved the following assessment objectives:

- **AO1:** develop ideas through sustained and focused investigations informed by contextual and other sources, demonstrating analytical and critical understanding.
- **AO2:** explore and select appropriate resources, media, materials, techniques and processes, reviewing and refining ideas as work develops.
- **AO3:** record ideas, observations and insights relevant to intentions, reflecting critically on work and progress.
- **AO4:** present a personal and meaningful response that realises intentions and, where appropriate, makes connections between visual and other elements.

Both components must show evidence of meeting the above assessment objectives.

Q. What can I study within the course(s)?

A. Initially in Year 12 you will develop your thinking and practical skills within workshop based lessons. You will then begin to think more thematically as you develop ideas towards a mock exam which will be given in the summer term of the first year. Within Year 13 you then structure your portfolio and direct your study within the following areas:

Photography

Students are required to work in one or more area(s) of photography, such as those listed below. They may explore overlapping areas and combinations of areas:

- Portraiture
- Landscape photography (working from the urban, rural and/or coastal environment)
- Still life photography (objects or the natural world)
- Documentary photography, photojournalism
- Fashion photography
- Experimental imagery
- Multimedia
- Photographic installation
- Moving image (video, film, animation)

Q. Where will an A-level qualification in art or photography lead me?

A. Students will gain experience of professionalism as they are required to display their A-level work in exhibition format. Visiting artists and visits to galleries could provide expansive experience of the wider world of art, craft and design.

Entry onto arts courses at university and other degree awarding bodies are generally through a combination of grade, a portfolio of work and an interview. Students will be encouraged to visit art departments and degree exhibitions to gain a sense of the standard required, as well as the type of student who would profit from a higher level course.

The creative industries in this country are the envy of the world, with graduates working in many fields in many countries. The UK creative economy comprises jobs in the creative industries and creative jobs which are in non-creative organisations (e.g. design or marketing teams within manufacturers). It comprises an estimated 2.9m jobs or 1 in 11 of all UK jobs (for more information please visit www.thecreativeindustries.co.uk).

Q. What are the entry requirements for these courses?

A. Six GCSES Grade 4 or above including English and maths, and at least Grade 5 in art. In instances where students did not take GCSE art or a creative subject, clear and strong evidence in the form of recent sketch books, portfolio or similar may be considered as evidence of enthusiasm and commitment.



An extra 4.5-6 hours per week is expected outside lesson time.

Missed deadlines will result in one hour of after school catch up.

Punctuality and being equipped to learn is paramount.

Where work is missed due to absence, catch up is expected.



“Have high expectations, be creative and most of all, enjoy the subject”

What should an A-level Photography sketchbook contain?

A sketchbook is a creative document that contains both written and visual material. It is a place for researching, exploring, planning and developing ideas – for testing, practicing, evaluating and discussing your project. It is the place where you learn from other artists and express and brainstorm ideas.

The sketchbook is an integral part of both your coursework and exam unit. It shows the journey (or development) towards your final piece and usually contains:

- Annotated contact sheets of photoshoots
- Selected images from photoshoots that show a development of an idea
- Editing processes using digital techniques
- Practice and trials of different techniques and processes in photography
- A range of mixed processes and techniques centered around photography
- Evidence of first-hand responses to subject matter and artworks, demonstrated through photographs, films, sound recordings and annotated pamphlets and sketches from exhibitions or gallery visits
- Contextual understanding of a range of artists and designers



We expect you to work with focus between lessons

It is imperative we see robust progress against the targets we set you

For every photography lesson you need:

- a DSLR camera. You **must** own a camera*. Good second hand cameras can be found at bargain prices – it does not need to be a new model.
- memory stick – you will be using digital sketch booking
- a note pad – for taking notes in class and whilst taking photos
- general stationery

* The school has a limited number of cameras for use in school only. However, all students are strongly advised to have their own camera for best results. Depending on household income a student can apply for a bursary to contribute towards costs of equipment and material.

It is helpful to have:

- a tripod
- SD card readers
- spare SD cards

A contribution of £25 is expected at the beginning of each Sixth Form Year.

This contribution will support the department in making specialist equipment available and enable work to be mounted and displayed.

Photography Summer Task

Recording Space & Place

This summer, we would like you visit a place or space that you would like to record through photography.

You must spend time in this space and record it through your camera lens.

Consider the following:

Light

Focus

Rule of Thirds

Depth of Field

Leading lines

Shutter speed

Motion

Angles

Contrast

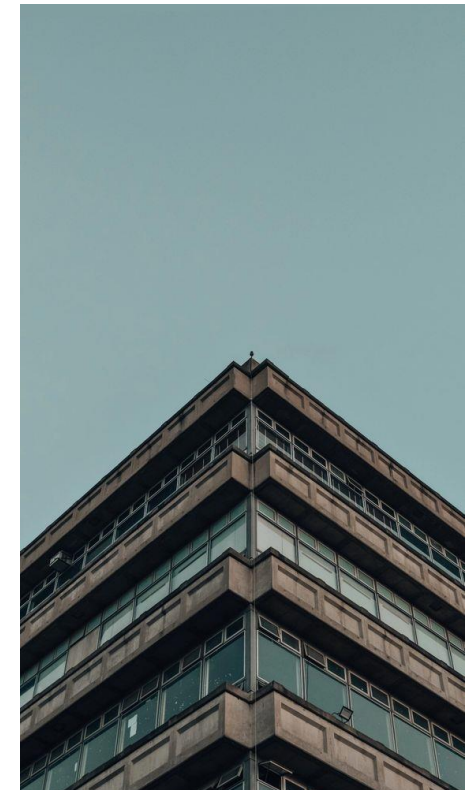
Colour and Black & White

Textures

Positive and negative space

A contact sheet of
photographs
(60-100 images)

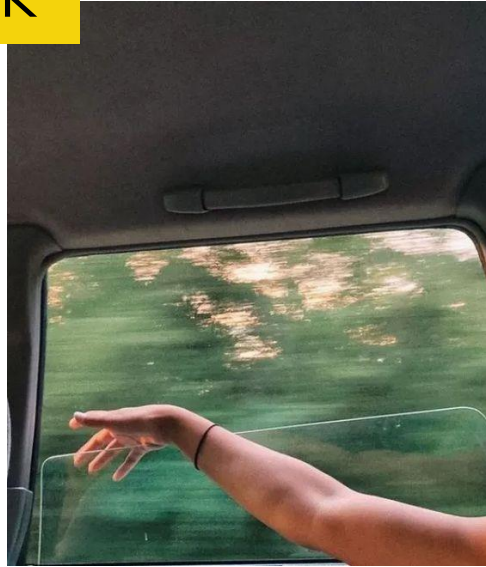
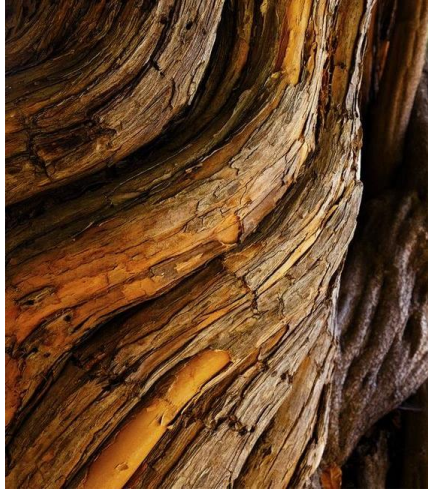
People watching
Architecture
Trees
Vehicles
Objects in a space



Photography

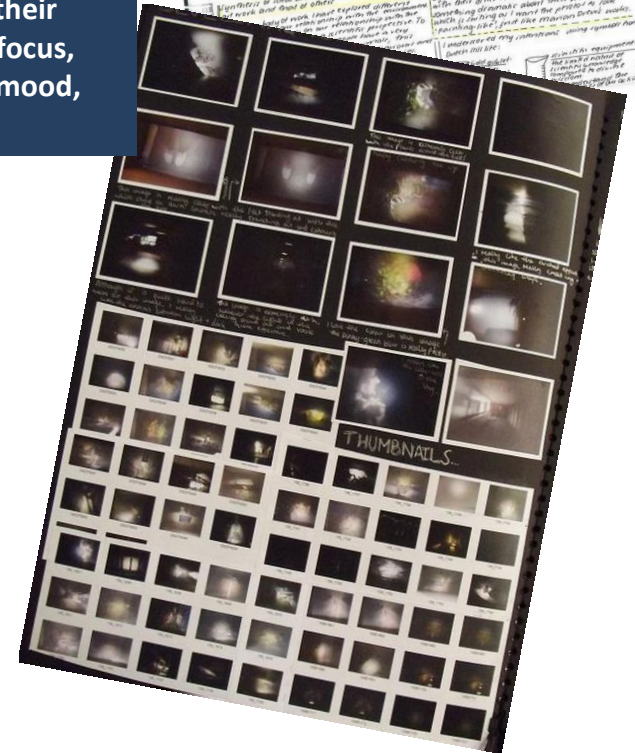
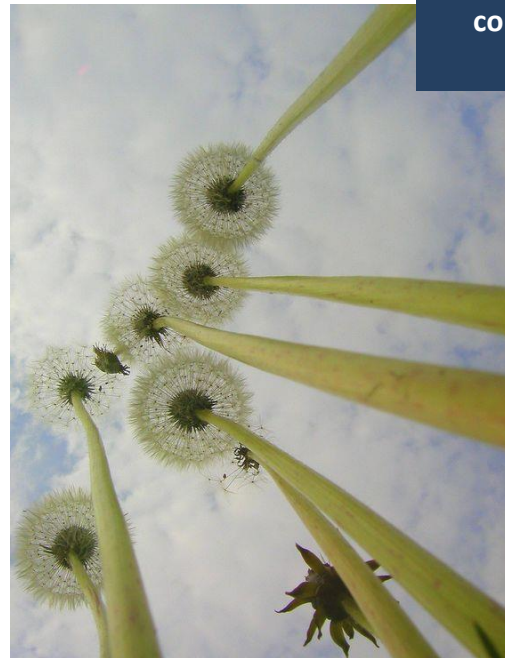
Summer Task

Recording Space & Place



Print out or digitally present your contact sheet (thumbnails), annotating specific photographs that you think are particularly strong

Select and present digitally or physically your 5 strongest images. Write about why you have chosen them, considering their composition, focus, colour, angle, mood, space.



Useful Resources

Art gallery websites with good search engines to help you with your artist research

The Tate Galleries	www.tate.org.uk
The National Gallery	www.nationalgallery.org.uk
The Musée D'Orsay	www.musee-orsay.fr/en/home.html
The Pompidou Centre	www.centrepompidou.fr/en
The Museum of Modern Art	www.moma.org
Saatchi Gallery	www.saatchigallery.com

Contemporary websites to search for artists

www.illustrationweb.com
www.folioart.co.uk/illustration/folio/index
www.booooooom.com/sorted/art
www.artrabbit.com
www.khanacademy.org/humanities/art-history

Don't forget these sites

www.studentartguide.com
(good for general advice!)
uk.pinterest.com
www.flickr.com