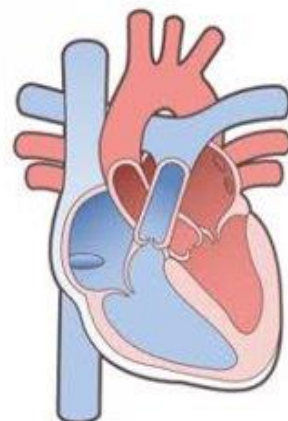


Health & Social Care

Syllabus
OCR

Core content: Equivalent of one A-level, students complete the following units:

- F090 – Principles of HSC (exam)
- F091 – Anatomy & Physiology (exam)
- F092 – Person- centred approach to care (NEA)
- F093 – Supporting people with mental health (NEA)
- F096 – Supporting people in relation to sexual health, pregnancy and postnatal health (NEA)
- F097 – Supporting healthy nutrition and lifestyles (NEA)



The course combines NEA and examination units which provides students with flexible and accessible assessment opportunities.

100% Distinction* – Pass grades
in 2025