

Health & Social Care

Syllabus
OCR

Core content: Equivalent of one A-level, students complete four compulsory and two optional units.

Unit 1: Building positive relationships

Unit 2: Equality, diversity and rights

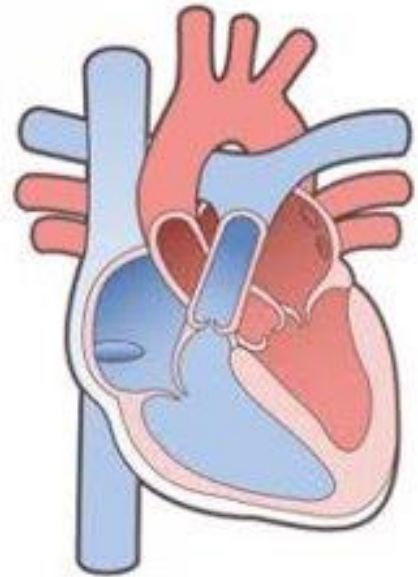
Unit 3: Health, safety and security.

Unit 4: Anatomy and physiology.

Unit 10: Nutrition for health.

Unit 13: Sexual health, reproduction and early stages development.

The course combines coursework and examination units which provides students with flexible and accessible assessment opportunities.



100% Distinction and Merit grades
in 2023